



THE SMART CULTIVATOR

HOW TO CALIBRATE



SMART RATE FERTILIZER



SECTION A: SET UP

STEP 01: Load the fertilizer



STEP 02: Verify all valves are open - from tractor to Smart Cultivator.



STEP 03: Start the tractor (if not already running).



STEP 04: Engage tractor hydraulic valve -
Activates SRF pump, tanks should agitate.



STEP 05: Flip Cultivator switch on.



STEP 06: Navigate HMI start up prompts.

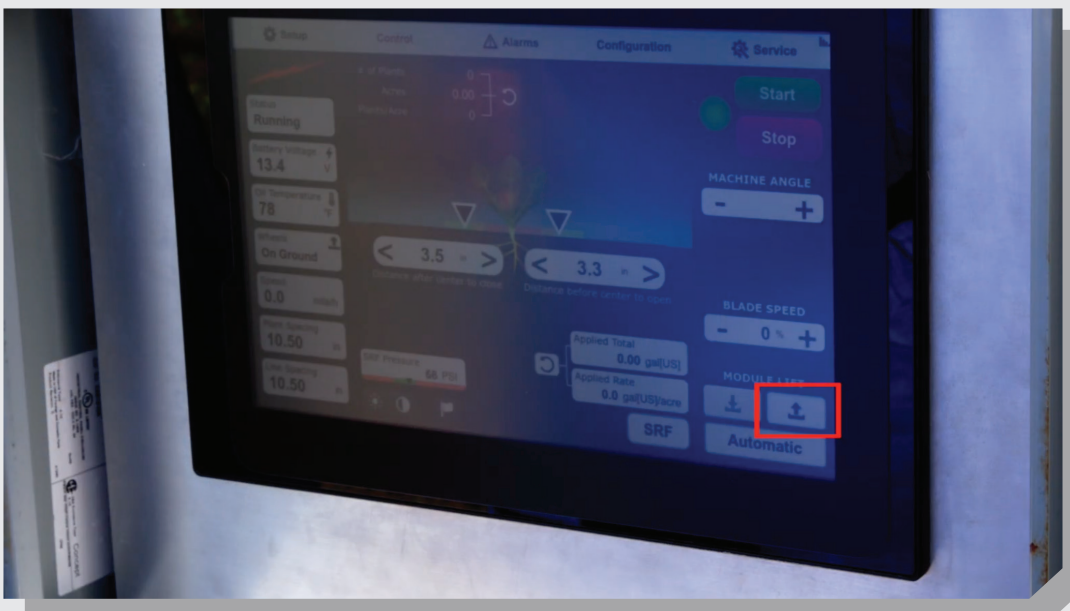


SECTION B: CALIBRATION

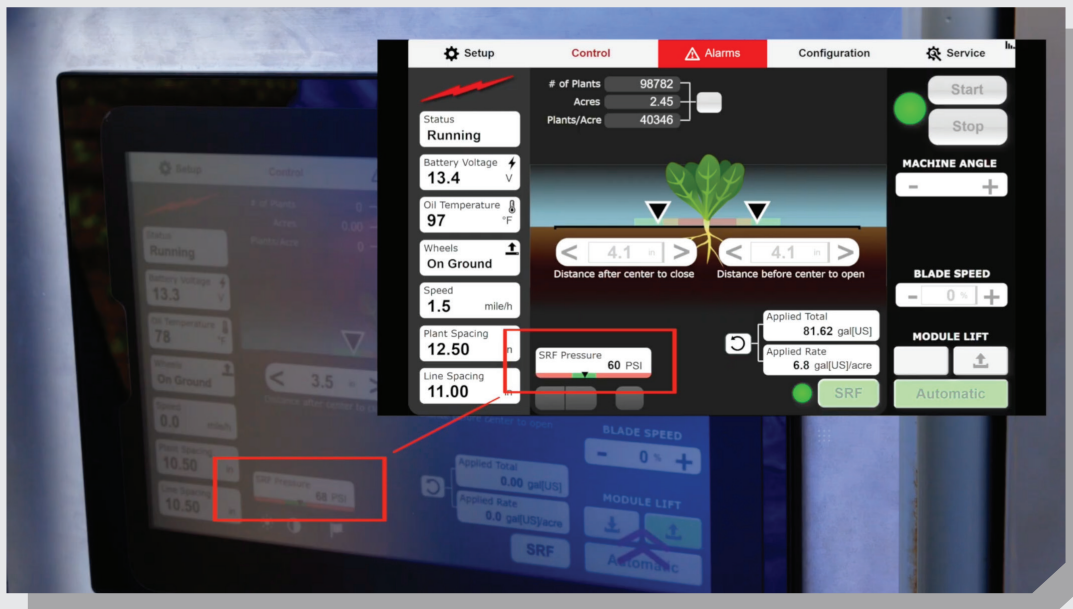
STEP 07: Press START in control screen. START must be engaged to calibrate SRF. After pressing START, press AUTOMATIC.



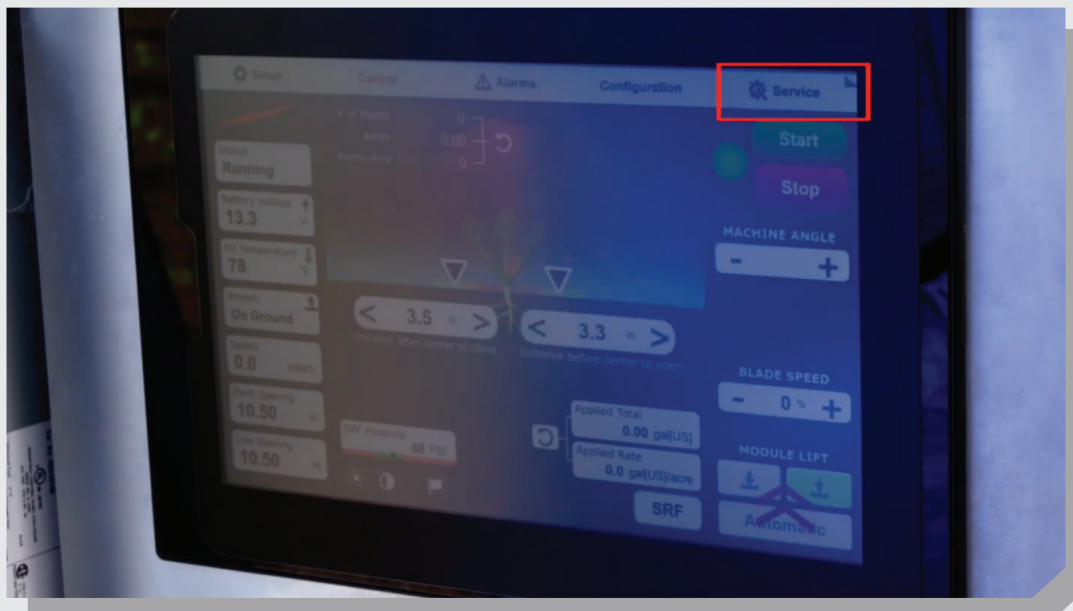
STEP 08: Press UP arrow to prepare Backbones. Backbones UP, Backbones valves LOCKED.

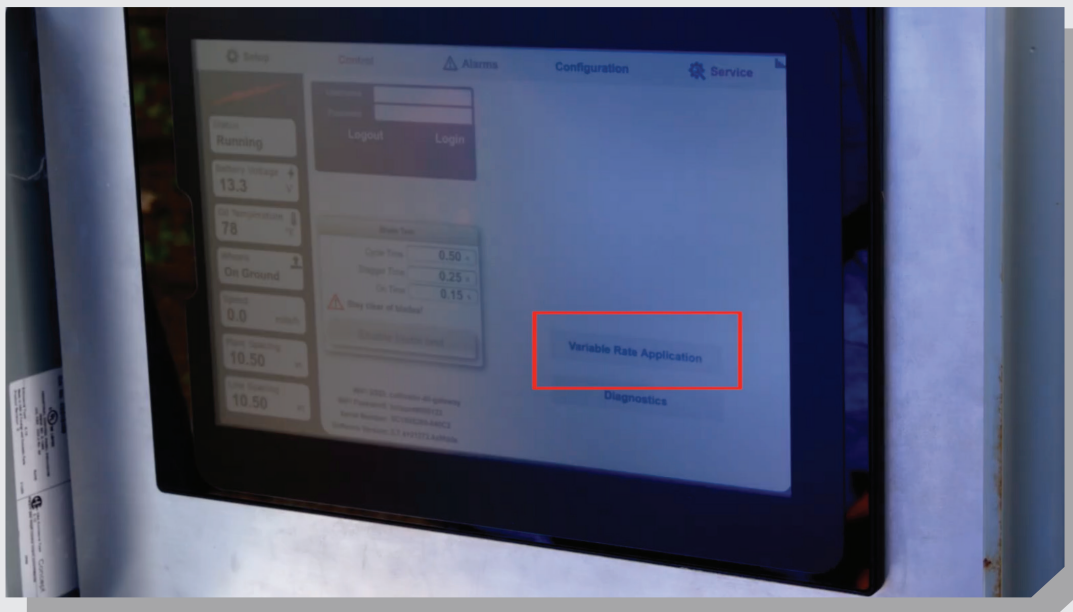
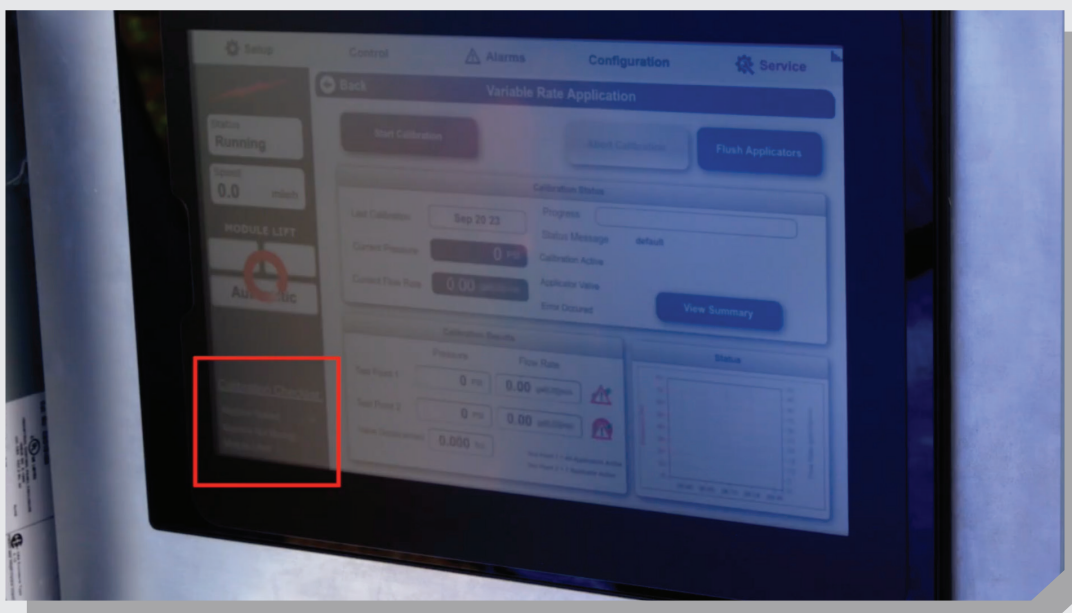


STEP 09: Verify SRF pump pressure equals 60-70 PSI. Check the digital reading in the bottom left of the control screen, or check with a physical gauge to ensure the pressure is between 60-70 PSI.



STEP 10: Go to service page.



STEP 11: Press "Variable Rate Application"**STEP 12:** Review SRF Calibration Checklist.
Ensure that all items have a GREEN check mark.



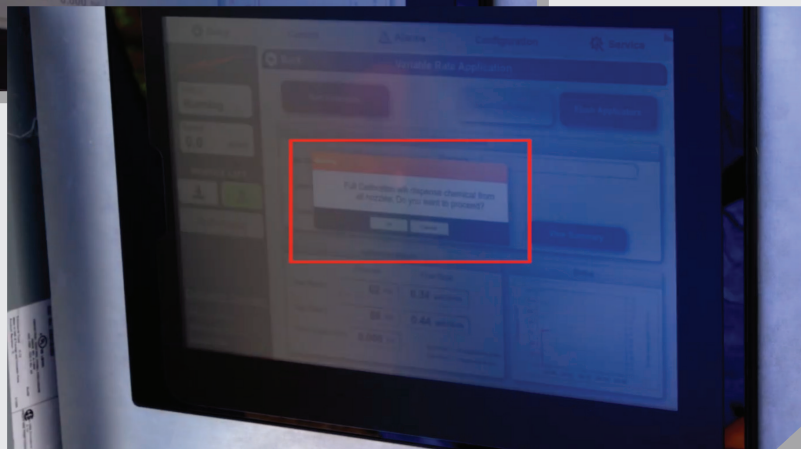
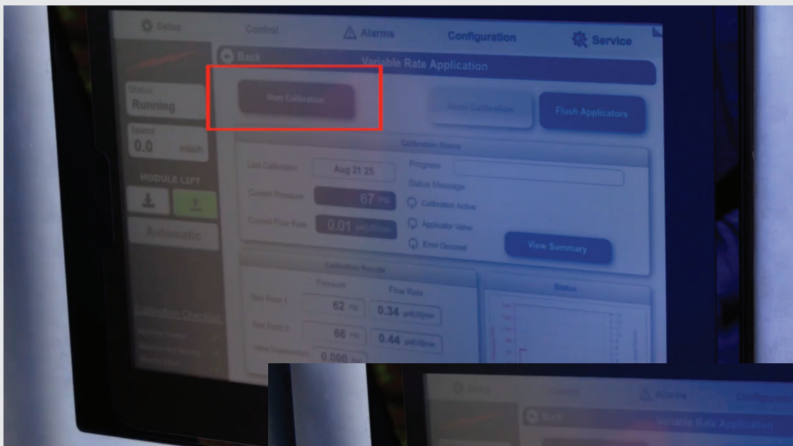
IMPORTANT:

The next steps will dispense material.
Ensure the area is clear.

TIP: Place buckets under knives to catch material.



STEP 13: Press "Start Calibration". Message will prompt on the screen, press OK when ready.



MATERIAL WILL FLOW FROM ALL KNIVES.

Calibration will take approximately 3-4 minutes.



STEP 14: Calibration complete.

- Green loading bar full
- Two green check marks = success
- Red "X" = fail

(press "view summary" for troubleshooting guidance)

